



Course Guide 2026

St Cuthbert Mayne Sixth Form

Educating for life in all its fullness
John 10:10

Contents

Introduction	3-4	Philosophy and Ethics	26
Core Values	5	Photography	27
Key Dates	7	Psychology	28
What to Study	8	Physics	29
Course Requirements	9	Science	30
		Sociology	31
		Sports and Physical Activity	32
		Uniformed Protective Services	33
Courses		Career Pathways	34
Art and Design	10	Creative and Marketing	35
Biology	11	Law	35
Business	12	Science and Research	36
Chemistry	13	Enterprise, Finance and Hospitality	36
Engineering	14	Health and Medical	37
English	15	Teaching and Education	37
Extended Project Qualification	16	Sport and Exercise	38
French	17	Public Services	38
Geography	18	Engineering	39
Health and Social Care	19	Why we chose Sixth Form	40
History	20	Alumni	41
Information Technology	21		
Maths	22	How to Apply	43
Media Studies	23		
Music Performance	24		
Performing Arts	25		



“Sixth-form students describe the sixth form provision as a ‘family-style setting’ where each student is valued. They are positive about the education, opportunities and guidance they receive, which enables them to move on to appropriate next steps.”
Ofsted 2025

Message from our Headteacher

Thank you for your interest in our Sixth Form at St Cuthbert Mayne School.

At St Cuthbert Mayne we are committed to preparing young people to live life in all its fullness. We recognise the critical importance of our Sixth Form in preparing students to lead successful and happy lives. We have the highest expectations of all of our students, who leave us ready for some of the best universities in the country, and degree/higher apprenticeships with leading employers both locally and nationally.

At the heart of our Sixth Form offer are expert teaching and the supportive relationships that make our school special. We offer a wide range of A Level and Level 3 qualifications in Sixth Form and supplement this with a varied programme of enrichment opportunities.

Students are supported by an experienced and knowledgeable team of specialist tutors who provide expert guidance to support students in preparing for life after school, and have exclusive use of the fantastic facilities in our Sixth Form Centre to support and enhance their academic and social experience.

We hope that you will enjoy looking at our Sixth Form course guide and we hope that you will strongly consider continuing your studies with us in September.

Please do contact us if you require further information or would like to visit our Sixth Form.

Mr J. Down
Headteacher



Welcome to our Sixth Form

I believe your Sixth Form years should be the best years of your life. You can think about an apprenticeship, or make plans for setting off to university. You will make friendships that will last. You can learn to drive. You will choose which subjects you would like to take further.

In the Pathways section of this course guide, I have included some of the companies our students have gone on to work in. They are doing some fantastic things. Right now, some students are working in Australia, Dubai, London and Cambridge. Others are working for ITV, Volkswagen, Barclays or serving locally in our Public Services as doctors, nurses, paramedics, police and the army.

They are an inspiration. But it wasn't by chance that they achieved these things. They worked hard and took their opportunities.

You will see in the Courses section that we have increased our offering, but please be aware some courses may not run if there is a lack of interest. We continue with the traditional A Levels, but we are extending vocational courses to offer Engineering, BTEC Science, Health and Social Care and Uniformed Protective Services.

Your teachers love their subjects. They may seem a bit 'full-on' sometimes, but you want your teachers to love what they are doing! They will push you, and even ignite the spark in you.

Sixth Form classes are smaller, teachers will know how you learn best and they will support you if you are thinking of going to university. Many of our students take part in Exeter Scholars and Summer schools. Recently, one student had an all-expenses-paid trip to America on a Summer school, one spent several days at Cambridge University and another gained a Gold Crest Award for their Physics placement.

There is also a lot going on outside of class. There are loads of trips to get involved with including subject trips, the Ski Trip, Cornwall, Parliament, University visits and more!

We are proud of our students. They take on leadership around the school and create a brilliant atmosphere in Sixth Form.

We hope you will join us next year with the same ambition.

Mr A. Boughton
Director of
Sixth Form
Learning



Our Core Values

At St Cuthbert Mayne School we have a set of core values which are key to encouraging and motivating students to be the very best they can be, both inside and outside of school.

Our core values underpin how we work as a school community and are the values we look to develop in all members of the community, to provide a positive and supportive learning environment in every part of the school.

It is our ambition to provide an inspirational Christian education that challenges, nurtures and enables all members of our school community to flourish so that they can live life to the full both now and in the future.

Courage

To be confident and to embrace challenge

Compassion

To care for others, to be peacemakers who understand the importance of forgiveness and reconciliation

Creativity

To be inventive, resourceful and visionary

Integrity

To do the right thing even when no one is watching



Key Dates

Event	Date	Overview	Where
Sixth Form Open Evening	Thursday 23rd October 6-8pm.	Meet subject teachers, hear a keynote presentation, explore all Key Stage 5 courses.	Main Hall and Sports Hall
Taster Day Choices	Friday 24th October	Your chance to choose which subjects you would like to try on our Sixth Form Taster Day.	A Google Form will be emailed to students.
Taster Day	Wednesday 19th November	Experience Sixth Form for a day. Sample some of the subjects you might like to take in the future.	You will be issued a timetable for the day by your tutor.
Folder Fair	2nd - 10th December	Meet current Sixth Form students to learn about subjects, workload, and student experiences.	Tutor groups during Collective Worship
Parents Evening	11th December	An opportunity for you and your parents to meet with subject teachers to discuss your progress.	Sports Hall
Application Form	Available from 6th February DEADLINE: 9:00 am 2nd March	Electronic Applications will be sent out, and you will need to choose the subjects you want to take.	
Guidance Appointments	30th March - 2nd April	You will meet with a member of the Senior Leadership Team to discuss the suitability of your chosen courses.	A letter will be sent out detailing the time and place of these meetings after the application deadline.

What to study

You should ask yourself a number of questions before deciding which courses to study:

Do I enjoy this subject?

Subject enjoyment, interest, involvement and examination success go hand in hand. It is difficult to motivate yourself to do well if you do not enjoy the subjects you are studying.

Am I good at this subject?

We would expect you to achieve the entry requirements on the following page.

Do I know enough about the course?

By reading this booklet and talking to the A Level teachers you can find out what is involved. You could also visit the exam board website for more details.

Do I need this subject to fulfill my career plans?

We offer a range of course pathways designed to support your career goals. In our Career Pathways section, you'll find detailed information about each pathway, including the subjects that align with your chosen career direction.

What grades do I need to study this course?

On the following page, there is a table showing the grades needed for each subject. Apart from Uniformed Protective Services, all subjects require 5 passes at Grade 4 including in English and Maths.



Course Requirements

Course	Qualification	Grades Required
Art and Design	A Level	5 Passes at Grade 4 or above including English and Maths and a Grade 5 in Art or Photography
Biology	A Level	5 Passes at Grade 4 or above including English and a Grade 6 in Maths and either Combined Science or Biology
Business	BTEC	5 Passes at Grade 4 or above including English and Maths
Chemistry	A Level	5 Passes at Grade 4 or above including English and a Grade 6 in Maths and either Combined Science or Chemistry
Engineering	BTEC	5 Passes at Grade 4 or above including English, Science and a Grade 6 in Maths
English Language and Literature	A Level	5 Passes at Grade 4 or above including Maths and a Grade 5 in English Language and Literature
French	A Level	5 Passes at Grade 4 or above including English, Maths and a Grade 6 in French
Geography	A Level	5 Passes at Grade 4 or above including English, Maths and a Grade 5 in Geography
Health and Social Care	BTEC	5 Passes at Grade 4 or above including English and Maths
History	A Level	5 Passes at Grade 4 or above including English, Maths and a Grade 5 in History
Information Technology	BTEC	5 Passes at Grade 4 or above including English and Maths
Maths	A Level	5 Passes at Grade 4 or above including English and a Grade 6 in Maths
Media Studies	A Level	5 Passes at Grade 4 or above Maths Grade 4 and a Grade 5 in English Language
Music Performance	BTEC	5 Passes at Grade 4 or above including English and Maths and a Grade 5 in Music
Performing Arts	BTEC	5 Passes at Grade 4 or above including English and Maths and a Grade 5 in Drama
Philosophy and Ethics	A Level	5 Passes at Grade 4 or above including English, Maths and a Grade 5 in RE
Psychology	A Level	5 Passes at Grade 4 or above including English and Maths
Photography	A Level	5 Passes at Grade 4 or above including English and Maths and a Grade 5 in Art or Photography
Physics	A Level	5 Passes at Grade 4 or above including English and a Grade 6 in Maths and either Combined Science or Physics
Science	OCR AAQ	5 Passes at Grade 4 or above including English and a Grade 6 in Maths and either Combined Science or Biology
Sociology	A Level	5 Passes at Grade 4 or above including English and Maths
Sports and Physical Activity	CTEC	5 Passes at Grade 4 or above including English and Maths and a +M2 in PE
Uniformed Protective Services	BTEC	5 Passes at Grade 3 or above including a Grade 3 in English and Maths



Art and Design

A Level - AQA Art and Design (Art, craft and design)

If you have an adventurous, creative and enquiring mind and are excited by shaping and determining the visual world around us, this is the course for you.

Creativity is an important skill for any future career. Our Art and Design Course will provide you with the skills and knowledge to create personal and imaginative work.

An A Level in Art and Design will open up further study opportunities either through a Foundation Course or an Undergraduate Degree. The career opportunities are endless. You could be a Portrait Artist, a Marketing Designer, an Architect, or work in TV and Film. The choice is yours!

There are 2 coursework modules and one final exam unit which is externally set by AQA with a Practical Exam.

You can choose to focus on a specialist area of study from a variety of exciting processes and media to suit your individual interests and abilities.

At the end of the course there is an exhibition where all your work produced is presented to the examiner and marks are awarded according to the assessment objectives.

This course can be taken as part of several of our Career Pathways. Go to Page 34 for more details.

ASSESSMENT:
Coursework 60% of Grade
Practical Exam 40% of Grade

ENTRY REQUIREMENTS:
At least 5 x GCSEs at Grade 4 or above, including English, Maths and a Grade 5 in Art and Design or Photography.

COURSE LEADER: Miss S. Al-Turki

CAREER OPPORTUNITIES:

- Visual Artist
- Graphic Designer
- Architect
- Illustrator
- Product Design
- Film/TV Production
- Website Design
- Magazine Editor
- Interior Design
- Fashion Design
- 3D Modeling
- Game Design
- Theatre Set Design
- Art Therapy
- Art History
- Gallery Curator
- And so much more!



Biology

A Level - AQA Biology

If you are looking at a career path in science, focusing on medical science, genetic engineering, biotechnology, or the environment, this course is for you.

This course covers a range of biological principles and concepts that build on what you have learned at GCSE.

From molecules, cells, genetics and the environment there is content that will appeal to all. There is a distinct focus on practical skills that complements the subject content well.

Across the Course you will study areas of Biology such as:

- Biological Molecules
- Cells
- Organisms exchange substances with their environment
- Genetic information, variation and relationships between organisms
- Energy transfers in and between organisms
- Organisms respond to changes in their internal and external environment

CAREER OPPORTUNITIES:

- Medical Science
- Pharmaceuticals
- Veterinary Science
- Marine Biology
- Ecology
- Teaching
- Biological Analyst
- Chemist
- Research
- And more!

- Genetics, populations, evolution and ecosystems
- The control of gene expression

Our course is designed to support your progression into appropriate higher apprenticeships and higher education.

This course can be taken as part of several of our Career Pathways. Go to Page 34 for more details.

ASSESSMENT:
Paper 1 - (35%)
External Exam 2hrs
Paper 2 - (35%)
External Assessment 2hrs
Paper 3 - (30%)
External Assessment 2hrs

ENTRY REQUIREMENTS:
At least 5 x GCSEs at Grade 4 or above, including English, and a Grade 6 in Maths and Combined Science.

COURSE LEADER: Dr L. Penwill



Business

BTEC - Pearson Level 3 National Diploma in Business

If you are looking to pursue a career in the business environment or maybe hope to set up your own business one day, this may be the course for you.

Our BTEC Business Course aims to prepare you for the fast-paced and constantly evolving world of business, ensuring they acquire the commercial knowledge and skills you need to work in business or establish their own enterprise.

This course will prepare you with the skills you need to pursue further study on Higher Apprenticeships or at University.

The course blends classroom learning with self-directed study. You will be required to research, plan and execute events that will give you realistic experience in the world of business.

There will also be opportunities outside the classroom to help and support your learning such as organised excursions to local business, and Work Experience.

This course can be taken as part of several of our Career Pathways. Go to Page 34 for more details.

This Course is Equivalent to 2 x A Levels

CAREER OPPORTUNITIES

- Entrepreneur
- Marketing Specialist
- Public Relations and Media
- Accounting
- Human Resources
- Events Management
- Law
- Banking and Finance
- Economics
- Politics
- And more!

ASSESSMENT:

Coursework 60% of Grade
Practical Exam 40% of Grade

ENTRY REQUIREMENTS:

At least 5 x GCSEs at Grade 4 or above, including English and Maths.

COURSE LEADER: Mr M. Wright



Chemistry

A Level - AQA Chemistry

You will cover 3 distinct elements on this course:

Physical chemistry - Including thermodynamics, rate equations, the equilibrium constant K_p , electrode potentials and electrochemical cells.

Inorganic chemistry - Including properties of Period 3 elements and their oxides, transition metals, reactions of ions in aqueous solution.

Organic chemistry - Including optical isomerism, aldehydes and ketones, carboxylic acids and derivatives, aromatic chemistry, amines, polymers, amino acids, proteins and DNA, organic synthesis, NMR spectroscopy, chromatography.

In Practicals you will look at:

- Measuring energy changes in chemical reactions
- Tests for identifying different types of compound
- Using different methods to measuring rates of reaction

- The study of electrochemical cells
- The preparation of organic solids and liquids
- Use of an advanced form of chromatography for more accurate results

ASSESSMENT:

There is no coursework on this course. However, your performance during practical sessions will be assessed.

There are three exams at the end of the two years for A Level, all of which are two hours long. At least 15% of the marks for A Level Chemistry are based on what you learned in your practical sessions.

There is also a significant Mathematical element to the course accounting for 20% of the marks.

CAREER OPPORTUNITIES:

- Chemist
- Clinical Biochemist
- Pharmacologist
- Doctor
- Research Scientist
- Toxicologist
- Environmental Consultant
- Science Writer
- Higher Education Lecturer
- And more!

ENTRY REQUIREMENTS:

At least 5 x GCSEs at Grade 4 or above, including English and a Grade 6 in Maths and Science.

COURSE LEADER: Dr L. Penwill



Engineering

BTEC - Pearson Level 3 National Extended Certificate in Engineering

If you have a flair for problem solving and thinking up creative solutions, paired with fondness of Maths and Physics, this may be the course for you.

Our BTEC Engineering Course is designed to provide you with knowledge, skills and practical experience in engineering, and will allow you to gain a broad knowledge of mechanical and electrical disciplines.

This course will provide you with the skills you will need to pursue Higher apprenticeships in Engineering, and to study Undergraduate courses in various related fields. You will explore how to apply mathematical and physical science principles to solve electrical, electronic and mechanical engineering. You will look at how processes are undertaken to deliver engineering services safely.

You will also take part in practical activities in the workshop and work experience to help you gain insight into the industry.

This course can be taken as part of several of our Career Pathways. Go to Page 34 for more details.

This Course is Equivalent to 1 x A Level.

- ASSESSMENT:**
- Unit 1: Engineering Principles**
Written Exam 2hrs
 - Unit 2: Delivering Engineering Processes Safely as a team**
Internal Assessment
 - Unit 3: Engineering Product Design and Manufacture**
External Practical Assessment
 - Unit 9: Work Experience in Engineering**
Internal Assessment

- ENTRY REQUIREMENTS:**
At least 5 x GCSEs at Grade 4 or above, including a Grade 4 in English and Science, and a Grade 6 in Maths.
- COURSE LEADER:** Mrs A. Loader

- CAREER OPPORTUNITIES:**
- Events Civil Engineer
 - Aerospace
 - Medical Engineer
 - Electronics Engineer
 - Robotics
 - Production Engineering
 - Renewable Energy
 - TV/Film Production
 - Biochemistry



English

A Level - AQA English Language and Literature (Combined)

If you love writing, reading, and all things literature and linguistics, then this course is for you.

Our combined English course provides you with a broad base of literary and linguistic study alongside a rich historical exploration of literature. It offers high levels of academic rigour that prepares you for further academic study through an Undergraduate Degree, a Masters and more! English also prepares you for any vocation that calls for reading or writing skills from journalism to law.

Over the course you will study how the world is created in literary and non-literary texts. You will study classics of English literature, alongside contemporary accounts of places, people and travel.

Selected works you may cover according to your teacher's specialism:

- Mary Shelley's *Frankenstein*
- Robert Browning's *Poetry Anthology*

- Tennessee Williams' *A Streetcar Named Desire*
- Jon Krakauer's *Into The Wild*
- Agatha Christie's *And Then There Were None*

This course can be taken as part of several of our Career Pathways. Go to Page 34 for more details.

- ASSESSMENT:**
- Paper 1 (40%) Telling Stories**
Section A - Remembered Places
Section B - Imagined Worlds
Section C - Poetic Voices

- Paper 2 (40%) Exploring Conflict**
Section A - Writing about Society
Section B - Dramatic Encounters

- Non-Exam Assessment (20%) Making Connections**
You will complete a comparative study that explores thematic links across fiction and non-fiction.

- CAREER OPPORTUNITIES**
- Journalism
 - Publishing
 - Professional Writing
 - Law
 - Teaching
 - Screenwriting
 - And more!

- ENTRY REQUIREMENTS:**
At least 5 x GCSEs at Grade 4 or above, including a Grade 5 in English Language and Literature.
- COURSE LEADERS:**
Miss R. Davis and Mr M. Sykes



Extended Project Qualification

Level 3 Qualification

This is a one-year-only level 3 qualification course. It has been designed to develop and assess your independent study skills.

The project itself allows you to choose a topic that is of interest. This freedom to choose means that you can either focus on a topic which is very familiar to you and simply develop new study skills, or you can use the project to explore a topic area that will be useful to your chosen career path.

You will learn skills such as:

- Information handling (how to obtain, critically select and use information, analyse data, apply it and compare it with other sources)
- Communication (how to communicate across a range of media)
- Time management and organisation (and strategies to meet agreed objectives)
- Problem solving
- Decision making

Your portfolio should demonstrate the process that you went through in carrying out the in-depth project and also learning about the topic chosen. Your grade is assessed solely on the contents of this portfolio. Therefore the portfolio should reflect 120 hours work – it will be quite substantial. It should also be clear in the portfolio what you have learned about independent study – there has to be a lot of self-reflection evident.

The EPQ can provide in-depth research evidence; this is important for students applying to universities as all universities like to see evidence of interest in your chosen topic beyond the classroom. If interviewed for university, this is likely to be a topic of conversation.

The EPQ can also be used as part of an AQA Baccalaureate.

This is a 1 year course and counts as 50% of an A level. It carries UCAS tariff points.

ASSESSMENT:

No exam! You are assessed by writing a report or creating an artifact, and submitting a portfolio

ENTRY REQUIREMENTS:

At least 5 x GCSEs at Grade 4 or above, including English and Maths

COURSE LEADER: Mr A. Martin



French

A Level - Edexcel French

If you have a talent for learning languages, then you might want to consider studying French at A Level.

With our world becoming more globalised by the day, the ability to speak another language, even if only to A Level, can open up many doors in your career and academic life.

Our French Course is designed to make language learning enjoyable and stimulating, and rewards advanced research and reading skills, and acknowledges the importance of French language culture.

French is spoken by 74 million people across the world, so being able to speak French can provide you with travel and work opportunities. In fact, according to the British Council's 2013 report 'Languages for the Future', 49% of UK businesses look for employees who can speak French, meaning being able to speak the French language is a powerful skill to have.

If you're planning on continuing onto higher education after school, then your knowledge of French will give you the opportunity to take a gap year in various French-speaking countries across the world. Your language

skills will also provide you with opportunities to work abroad in Summer camps, where you can truly put language skills to good use.

Studying French at A Level not only improves your language skills, but it provides you with insights into France's history and culture.

ASSESSMENT:

AO1: Understand and Respond (20%)

In speech to spoken language including face-to-face interaction and in writing to spoken language drawn from a variety of sources

AO2: Understand and Respond (30%)

In speech and writing to written language drawn from a variety of sources

AO3: Manipulate the language accurately (30%)

In spoken and written forms, using a range of lexis and structures

AO4: Show knowledge and understanding of, and respond critically and analytically to (20%)

Different aspects of the culture and society of countries/communities where the language is spoken

CAREER OPPORTUNITIES

- Translator
- Banking & Finance
- Marketing
- Teaching
- Travel and Tourism
- International Law
- And more!

ENTRY REQUIREMENTS:

At least 5 x GCSEs at Grade 4 or above, including English, Maths and a Grade 6 in French.

COURSE LEADER: Miss A. Rowbury



Geography

A Level - AQA Geography

If you are fascinated by the environment, and want to examine the awe-inspiring natural processes of our beautiful planet or you are curious about how humans have impacted and interacted with the world, this course is for you.

Geography offers a strong foundation in both Physical and Human Geography and in practical applied skills. You will study a wide range of global issues such as population growth and implications for the future, globalisation and its effects in different countries, and physical topics such as glacial systems, ecosystems and their management, and the water cycle.

Fieldwork is an integral part of the course and will form part of a non-examined assessment.

Component 1: Physical Geography

You will look at Water and Carbon Cycles, Glacial Systems and Landscapes, Ecosystems under stress.

Component 2: Human Geography

You will study Global Systems and Global Governance, Changing Places, Population and Environment.

Component 3: Fieldwork Investigation

You will complete an investigation based on a question or issue related to any part of the specification, which includes data collected in the field, that is 3000-4000 words in length.

Our course is designed to support your progression into appropriate higher apprenticeships and higher education.

This course can be taken as part of several of our Career Pathways. Go to Page 34 for more details.

ASSESSMENT:

Component 1 (40%)

Written Exam 2hrs and 30 mins

Component 2 (40%)

Written Exam 2hrs and 30 mins

Component 3 (20%)

Fieldwork Investigation 3000-4000 words

ENTRY REQUIREMENTS:

At least 5 x GCSEs at Grade 4 or above, including English, Maths and a Grade 5 in Geography

COURSE LEADER: Mr P. Chapman

CAREER OPPORTUNITIES

- Environmental Manager
- Industry Management
- Retail and Personnel
- Graphic Design
- Insurance
- Banking
- Social Work
- Accountancy
- Law
- Architecture
- Tourism
- Journalism

Health and Social Care

BTEC - Pearson Level 3 AQA Btec National Extended Certificate

Health and social care encompasses all hospital activities, medical nursing homes and GP services.

The social care sector includes residential nursing care, residential nursing facilities, residential care facilities, domiciliary care and social work. There are more than three hundred distinct career paths in this sector, and it is a major employer, employing almost 4 million people across the UK. Our course is designed to support your progression into higher apprenticeships and higher education. Students will study 3 mandatory units and 1 optional unit.

Mandatory Units

- Unit 1: Human Lifespan Development
- Unit 2: Human Biology and Health
- Unit 3: Principles of Health and Social Care Practice

Optional Units

- Unit 4: Health, Policy and Wellbeing
- Unit 5: Promoting Health Education
- Unit 6: Safe Environments in Health and Social Care

Unit 7: Health Science

This course can be taken as part of several of our Career Pathways. Go to Page 34 for more details.

This Course is Equivalent to 1 x A Level.

ASSESSMENT:

Units 1 and 2 are externally assessed through a written exam which is 90 minutes.

Units 3 and 4, 5, 6 or 7 are assessed by the teacher and moderated by the Exam Board.

CAREER OPPORTUNITIES

- Nursing
- Midwifery
- Occupational Therapy
- Social Work
- Physiotherapy
- Pharmacies
- Care worker
- Counseling
- And more!

ENTRY REQUIREMENTS:

At least 5 x GCSEs at Grade 4 or above, including English and Maths

COURSE LEADER: Mrs A. Loader



History

A Level- OCR History

History is the study of the past. It examines the political, economic, social and cultural issues of different eras and cultures. At its most ambitious, the subject is the study of everything.

Of course, in A level History you won't be expected to learn everything from the Battle of Hastings in 1066 to the Cold War, but you will cover enough in breadth and depth to develop a good understanding of events in their historical context, and to develop an historian's approach to the past. "Why was a particular course of action followed?" is a fundamental question underlying the study of history, and its primary purpose is not to judge but to comprehend. History will teach you how to analyse, reflect and to argue clearly in class and in writing.

What will I study?

Unit Y105: England 1445-1509

You will look at the Lancastrians, Yorkists and Henry VII, the outbreak of the War of the Roses, the rule of Edward VI, the defeat of Richard III, the rise of the House of Tudor, including Henry VII's reign.

Unit Y221: Democracy and Dictatorships in Germany 1919-1963

You will look at the Weimar Republic, the Nazi Dictatorship, the impact of war and defeat of Germany, the Federal Republic and the DDR.

Unit Y318: Russia and its Rulers (1855-1964)

You will look at the nature of government, the impact of dictatorial regimes on the economy and society of the Russian Empire and the USSR, the impact of war and revolution, Russian nationalities and satellite states.

Unit Y100: Topic Based Essay

This is an independently researched essay around 3000-4000 words in length.

ASSESSMENT:

Unit Y105 (25% of Grade)

Written Exam 1 hr and 30 mins

Unit Y221: (15% of Grade)

Written Exam 1 hr

Unit Y318 (40% of Grade)

Written Exam 2 hrs and 30 mins

Unit Y100 (20% of Grade)

Non-Exam Topic-based Essay

ENTRY REQUIREMENTS:

At least 5 x GCSEs at Grade 4 or above, including English and Maths and a Grade 5 in History.

COURSE LEADER: Mr A. Hammond

CAREER OPPORTUNITIES

- Historian
- Academic Researcher
- Archivist
- Conservation
- Heritage Manager
- Museum Curator
- Politics
- Archaeologist
- Law
- Teaching
- And more!



Information Technology

BTEC - Pearson Level 3 National Extended Certificate Information Technology

This qualification allows students to study the fundamental knowledge of Information Technology covering the role and implications of using Information Technology systems and cyber-security threats and how to manage attacks.

Students will also develop important skills for creating websites to meet a specific purpose and to manage data through the development of a relational database solution. There are two examined units and two internally assessed units where students will engage in practical tasks to develop their Information Technology skills and knowledge. The qualification is designed to be taken alongside A Levels as part of a study programme and can link to learning in A Level Mathematics and A Level Business Studies. It is intended for students that wish to progress into higher education as a pathway to employment.

What will I study?

The qualification has four mandatory units covering the following topics:

Coursework units:

Website Development

The development tools, techniques and

processes used in website development and how to test usability, functionality and fitness for purpose

Relational Database Development.

Structure of data, data design and database management systems (DBMS).

Exam units:

Information Technology Systems

Information technology systems, including the relationship between software and hardware, and the issues related to IT systems

Cyber Security and Incident Management

Types of cyber security attacks, the vulnerabilities in networked systems and how to plan and respond to attacks.

ASSESSMENT:

Coursework units (34% of Grade)

Website Development

Relational Database Development

Exam units (66 % of Grade)

Information Technology Systems

Cyber Security and incident Management

CAREER OPPORTUNITIES

- Website Designer
- App Developer
- Software Engineer
- IT Analyst
- Game Design
- Marketing
- Social Media Manager
- Teacher
- And more!

ENTRY REQUIREMENTS:

At least 5 x GCSEs at Grade 4 or above, including English and Maths

COURSE LEADER: Mrs H. Gowers



Mathematics

A Level - AQA Mathematics

To succeed in this beautiful subject you will need to have the passion to understand concepts, solve problems and use the language and notation of mathematics. Mathematics is highly regarded by higher educational establishments and employers. It shows students are resilient, independent and logical problem solvers.

What will I study?

You will continue to study algebra, trigonometry and co-ordinate geometry further. You will learn the new areas of calculus, and explore further numerical applications and methods such as:

- Mechanics - The emphasis is placed on modeling a real problem mathematically and solving it
- Statistics - The ability to use mathematic methods to sort and interpret data of all different types

The gaining of new concepts is organized through lessons and private study which is designed to give practice and consolidation, building upon prior knowledge.

We encourage that you apply your knowledge in related, though often unfamiliar situations.

CAREER OPPORTUNITIES

- Finance and Accounting
- Engineering
- Sound Engineer
- Data Scientist
- Meteorologist
- Academic Researcher
- Statistician
- And more!

There will be on-going home learning tasks and roughly ten assessed pieces of work per year based on examination questions. It is crucial that you keep up-to-date with your learning to ensure you understand challenging concepts before moving on.

Before study:

An algebra assessment will also be undertaken by all students wishing to take the course at the beginning of Year 12. Suitable revision materials are provided over the holidays and the outcome of this will determine suitability for the course.

Those wishing to study Further Mathematics need to speak to the Maths Department directly. Students will need to have attained at least a Grade 8 in GCSE Mathematics.

This course can be taken as part of several of our Career Pathways. Go to Page 34 for more details.

ASSESSMENT:

- Paper 1: Written Exam 2 hrs
- Paper 2: Written Exam 2 hrs
- Paper 3: Written Exam 2 hrs

All examinations take place in the June exam series at the end of the academic year.

ENTRY REQUIREMENTS:

At least 5 x GCSEs at Grade 4 or above, including English and a Grade 6 in Maths

COURSE LEADER: Mr L. Harvey



Media Studies

A Level - OCR Media Studies

Looking to pursue a career in TV/Film , or a career in design and marketing, or even a career in animation?

Our course provides you with the knowledge and technical skills to progress into University or directly into industry. Past students have gone onto work for companies such as Google, Disney, Lucasfilm, and Industrial Light & Magic, contributing to major blockbuster films like Ant-Man, Snow White, and Quantumia. You don't need to have previously taken Media at GCSE to choose this course.

What will I study?

You will study various forms of media across this course. You will also learn how to use industry standard tools and software, such as: Photoshop, Premiere Pro, Specialist Cameras and Drones.

Paper 1: Media Messages

We study the relationship between media products such as news, magazines and advertisements and their audiences... who are often ourselves, after all. How do those media companies treat us? How do we react to their products? Is all of our diversity accounted for, or is this media just one-size-fits-all?

CAREER OPPORTUNITIES

- Video Game Developer
- Graphic Designer
- Advertising
- Broadcaster
- Film Director
- Web Designer
- Marketing
- Animator
- And more!

Paper 2: Evolving Media

We explore how different industries like film, radio and video games have evolved over time, and how audience habits and expectations have developed alongside them. What would a 1930s cinema audience make of Marvel's Avengers? What would a modern gamer make of Pong? Would an American audience watch a German TV show?

Practical: Making Media

A significant component of your A Level is a practical project set by OCR. This year, our students had the opportunity to design, direct, edit, and launch their own music videos. This hands-on experience not only honed their technical skills but also enhanced their communication, organisation, and self-promotion abilities. And don't worry, none of our students could play an instrument or sing a note, but you'd never guess from their impressive results!

ASSESSMENT:

- Paper 1: Written Exam (35% of Grade) 2 hrs
- Paper 2: Written Exam (35% of Grade) 2 hrs
- Practical: Coursework (30% of Grade) - due by end of Year 12 summer.

ENTRY REQUIREMENTS:

At least 5 x GCSEs at Grade 4 or above, including Maths and a Grade 5 in English Language.

COURSE LEADER: Mr E. Jukes



Music Performance

BTEC - Pearson Level 3 Extended Certificate in Music Performance

This course is suitable for all instrumentalists or vocalists who have some proficiency and a passion to develop as a performer.

The course broadens experience and skills in ensemble performance and you will be required to perform in public on a regular basis throughout the course.

You will perform a variety of genres covering popular music from the 1950s to the modern day. The course also includes training in listening, critical review and composition.

The music industry is vast and diverse. It offers a huge amount of employment options to suit just about anyone looking to work in this area! Our course will provide you with the skills to progress into higher education and into the industry.

There will be extra-curricular opportunities such as our School Productions to enrich your studies, and an expectation for you to be involved.

If you didn't take Music at GCSE, you must complete an audition in order to study this at A Level.

ASSESSMENT:

Year 12:

Solo Performance Practice
(Internally Assessed)

Practical Music theory and Harmony
(Internally Assessed)

Year 13:

Ensemble Music Performance
(Internally Assessed)

Professional Practice in the Music Industry
(Externally Assessed)

ENTRY REQUIREMENTS:

At least 5 x GCSEs at Grade 4 or above, including English and Maths and a Grade 5 in Music.

COURSE LEADER: Mr J. Waterworth

CAREER OPPORTUNITIES

- Musician
- Live Events Production
- Composition
- Music Journalism
- Sound Engineering
- Songwriting
- Music Production
- Musical Theatre
- Stage Manager
- Digital Music
- Popular Music Performer
- Teacher
- And more!



Performing Arts

BTEC - Pearson Level 3 National Extended Certificate in Performing Arts

If you are interested in learning about the performing arts sector alongside other fields of study, with a view to progressing to a wide range of higher education courses, this is the course for you.

Our course will encompass studying, exploring and performing drama, dance drama and musical elements from a range of different perspectives in order to develop a range of transferable skills. Theory based content will focus on completing reports, log books and theatre reviews supported by trips and workshops. Students will study 4 units in total - 3 of which are compulsory and 1 is chosen by the teaching team, in consultation with the students for study in Year 13.

Unit 1: Investigating Practitioners' Work

This unit requires studying 2 different practitioners and the impact they have made on the world of theatre. The lessons will be a combination of practical and theory based work and will lead to a written exam in May of Year 12.

Unit 2: Developing Skills and Techniques for Live Performance

Students work towards an evening

performance in the February of Year 12 and complete both a log book and a report on career training and opportunity routes within the industry.

Unit 3: Group Performance Workshop

A devised performance which takes place in Yr13 with supporting written evidence.

Final Unit:

This will be a choice of acting, movement or musical theatre depending on the skills of the group.

If you didn't take Music or Drama at GCSE, you can still join the course, but must show genuine passion and enthusiasm. Please speak to Mrs Byng for guidance.

ASSESSMENT:

Unit 1: 3 x 1 hr written exams based on practical and theoretical exploration (Year 12)

Unit 2: Performance, report and log book in February (Year 12)

Unit 3: Performance and 4 x 1 hr written examinations in May (Year 13)

Final unit: Performance, report and log book February (Year 13)

CAREER OPPORTUNITIES

- Performer
- Director
- Costume Design
- Stage Manager
- Box Office
- Stage Technician
- Choreography
- Teacher
- AV Technician
- And much more!

ENTRY REQUIREMENTS:

At least 5 x GCSEs at Grade 4 or above, including English and Maths and a Grade 5 in Drama.

COURSE LEADER: Mr J. Waterworth and Mrs M. Byng



Philosophy and Ethics

A Level - OCR Religious Studies

Philosophy and Ethics offers you an interesting and intellectually challenging A Level that will help develop your understanding of philosophical, spiritual, moral, social and cultural issues.

This is your opportunity to ask some of the big questions of life such as: Should there be rules to ensure that countries trade fairly with each other? Where does our understanding of morality come from? Is there life after death? Can we prove God's existence? Studying Philosophy, Ethics and DCT will also develop a variety of skills, including those of discussion and debate. The valuable skills of logical argument and critical evaluation are also developed and can be transferred to other areas of study.

What will I study?

Our course is divided into 3 areas of study:

Philosophy of Religion

You will study philosophical language and thought, and issues and questions raised by belief including ancient philosophical influences (Plato and Aristotle), the nature of the soul, mind and body, arguments about the existence or non-existence of God, the

problem of evil, religious experiences and religious language.

Religious Ethics

You will explore key concepts and the works of influential thinkers, ethical theories and their application: Normative ethical theories such as natural law, situation ethics Kant and utilitarianism, the application of ethical theory to euthanasia and business ethics, ethical language, debates surrounding the idea of conscience, with a focus on Freud and Aquinas, and sexual ethics.

Development of Christian Thought

You will undertake a study of Christian beliefs, values and teachings, their interconnections, and how they vary historically and in the contemporary world. These include a study of human nature, death and the afterlife, Christian moral action, issues surrounding gender, the challenge of secularism and liberation theology.

ASSESSMENT:

Each unit will be assessed through an externally-set written exam.

CAREER OPPORTUNITIES

- Theology
- Law
- Teaching
- Social Work
- Nursing
- Probation Services
- And more!

ENTRY REQUIREMENTS:

At least 5 x GCSEs at Grade 4 or above, including English, Maths and a Grade 5 in Religious Studies.

COURSE LEADER: Miss J. Woolway

Photography

A Level - AQA Photography

Photography is a fun and exciting course that enables you to analyse and critically understand the work of photographers you have researched and annotate and discuss the work of linked concepts.

It is recommended that if you take this subject you purchase a camera (digital or SLR) which will help with your studies outside of lesson time. Don't worry if this is not the case as we have some in school you can use. At the end of the course an exhibition will be put up displaying the amazing photographs you have taken for friends and family to see. Some pupils in previous years have sold some of their photographs!

Unit 1

In this unit you will be given a starting point of ideas and projects you could undertake based around a starting point linked to 'Objects'. To start the project off you will be led through a series of skill based lessons where you will be taught a range of techniques to enhance the quality of images. From this you will then go on to develop your own ideas based on work you have researched and take your own photographs in a similar style showing

connections to the work of others. You will then go on to refine your ideas through print screens. During this unit you will also be taught more traditional ways of capturing images through the use of pinhole cameras (you will make your own camera).

Unit 2

Carrying on from unit 1 you will have learnt a great deal about the structure of the course to enable you to get the most out of a second coursework unit. In the second unit of work you will develop a personal project choosing your own title and starting point to base a project on. You will then follow the key criteria (A01, A02, A03, A04) to enable you to gain marks across the mark scheme.

ASSESSMENT:

Coursework 60% of Grade
Practical Exam 40% of Grade

CAREER OPPORTUNITIES

- Wild life photographer
- Fashion photographer
- Press photographer
- Wedding or food photography
- And more!

ENTRY REQUIREMENTS:

At least 5 x GCSEs at Grade 4 or above, including English, Maths and a Grade 5 in Art and Design or Photography.

COURSE LEADER: Miss S. Al-Turki



Psychology

A Level - Eduqas Psychology

If you are curious about the human mind and want to investigate further why people act the way they do, this may be the course for you.

This is a stimulating course, which covers all the key areas of Psychological Investigation. A high level of motivation is vital for this demanding A Level. What makes the subject so interesting is the fact that you have to make up your own mind about the information and theories put before you. The key difference from GCSE is that you have to build a lot of your own ideas into the written work you produce. You also have to learn a lot of information, but the best grades are achieved by those who take an imaginative and questioning approach.

What will I study?

Component One: Approaches to Psychology

- What are the different ways Psychologists use to explain Behaviour?
- What are the key studies connected with each approach?

Component Two: Investigating Behaviour

- This module focuses on the importance of conducting proper research when investigating behaviour.

Component Three: Implications in the Real World

- Part 1: Applications We will study 3 behaviours: Stress, Criminal Behaviour and Schizophrenia.
- Part 2: Controversies We will study large areas of debate: Sexism, Ethics, Bias and Psychology as a science.

We want you to take away with you a good grade, as the vast majority of our students do, but that's not all!

We want you to gain knowledge that will make your life more rewarding and fulfilling and skills that will help you cope and succeed in the 21st Century. Qualities like determination, confidence, organisation and self-reliance that will make you a more successful person. Experiences that you will remember for the rest of your life - Welcome to Psychology!

This course can be taken as part of several of our Career Pathways. Go to Page 34 for more details.

ASSESSMENT:

There are three exams (2hrs 15 minutes each) which take place in summer at the end of Year 13.

CAREER OPPORTUNITIES

- Forensics
- Criminology
- Human Resources
- Politics
- Advertising
- And more!

ENTRY REQUIREMENTS:

At least 5 x GCSEs at Grade 4 or above, including a Grade 4 in English and Maths.

COURSE LEADER: Mrs L. Rust-Ashford

Physics

A Level - AQA Physics

This course covers a range of fundamental science topics, starting with a dive into the worlds of fundamental particles and particle accelerators.

You will learn the science of experiment and measurement from the outset which you are assessed in exams and during core practical work. Following this, you will build on skills learnt at GCSE and explore the topic of "Electricity".

What will I study?

Our course is divided into 3 areas of study.

In Year 1 you will study:

- Measurements and their errors
- Particles and Radiation
- Waves
- Mechanics and Materials
- Electricity

In Year 2 you will study:

- Further Mechanics and Thermal Physics
- Fields and their consequences
- Nuclear Physics

You will also have the option to study one of these in Year 2:

- Astrophysics
- Medical Physics
- Engineering Physics
- Turning points in Physics
- Electronics

This course can be taken as part of several of our Career Pathways. Go to Page 34 for more details.

ASSESSMENT:

Paper 1: Written Exam (34% of Grade)

60 mark short & long answer questions
25 marks multiple choice questions

Paper 2: Written Exam (34% of Grade)

60 mark short & long answer questions
25 marks multiple choice questions

Paper 3: Written Exam (32% of Grade)

45 mark short & long answer questions:
Topic: "Practical skills & data analysis"
35 mark short & long answer questions:
Topic: Optional

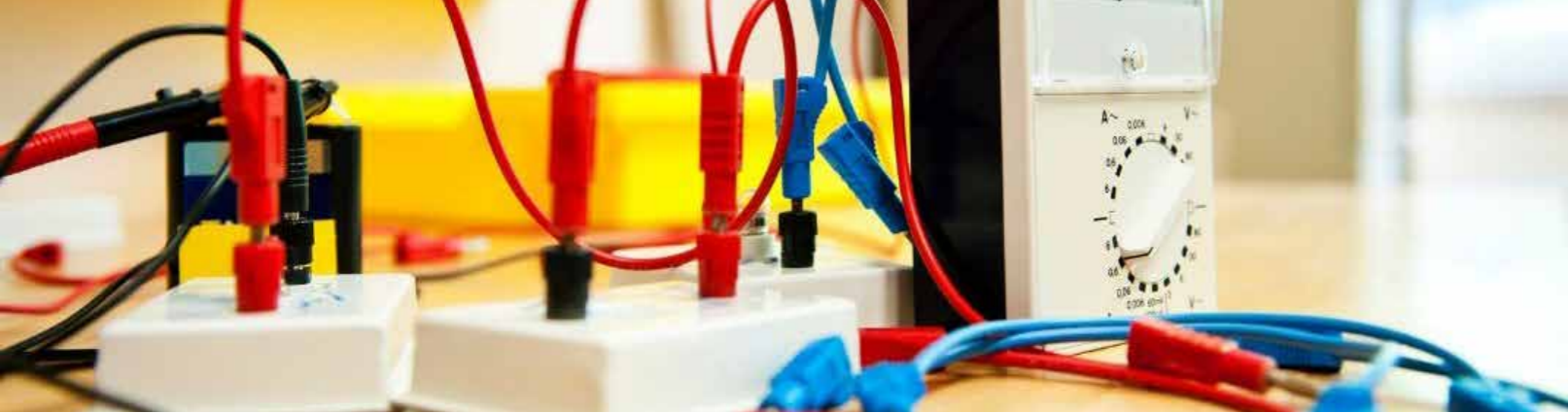
CAREER OPPORTUNITIES

- Radiographer
- Engineering
- Meteorology
- Research Scientist
- Nuclear Science
- Transport
- Aerospace
- Astronomer
- Sound Engineer
- And more!

ENTRY REQUIREMENTS:

At least 5 x GCSEs at Grade 4 or above, including English and a Grade 6 in Maths, Combined Science or Triple Science

COURSE LEADER: Dr L. Penwill



Science

Cambridge OCR AAQ Applied Science

The course is more coursework based than traditional A Levels, so if exams are not your thing, but science is, this is the course for you!

This course will give you the science skills that employers in industry are looking for whilst giving you the opportunity to gain A Level equivalents, accepted by Universities. Science is the key to unlocking a variety of rich and varied career pathways.

What will I study?

Unit 1 - Fundamentals of Science

This unit encompasses all three sciences and teaches you the Level 3 foundations required for the rest of the course.

Unit 2 - Investigating Science

This course teaches you to become proficient in techniques you would use in an industrial chemistry laboratory.

Unit 3 - Science in Society

In this unit you will learn about what it is like to be a research scientist and how to communicate your findings to the rest of the world.

Unit 4 - Optional

During this unit you will plan and carry out investigations to where you will be separating and analysing chemical substances.

Unit 5 - Forensic Biology

This unit will see you analysing cell samples and using analytical techniques to interpret evidence.

This course can be taken as part of several of our Career Pathways. Go to Page 34 for more details.

This Course is Equivalent to 1 x A Level

ASSESSMENT:

Unit 1 and 3 are externally set and examined/assessed.

Unit 2, 4 and 5 are assessed with coursework.

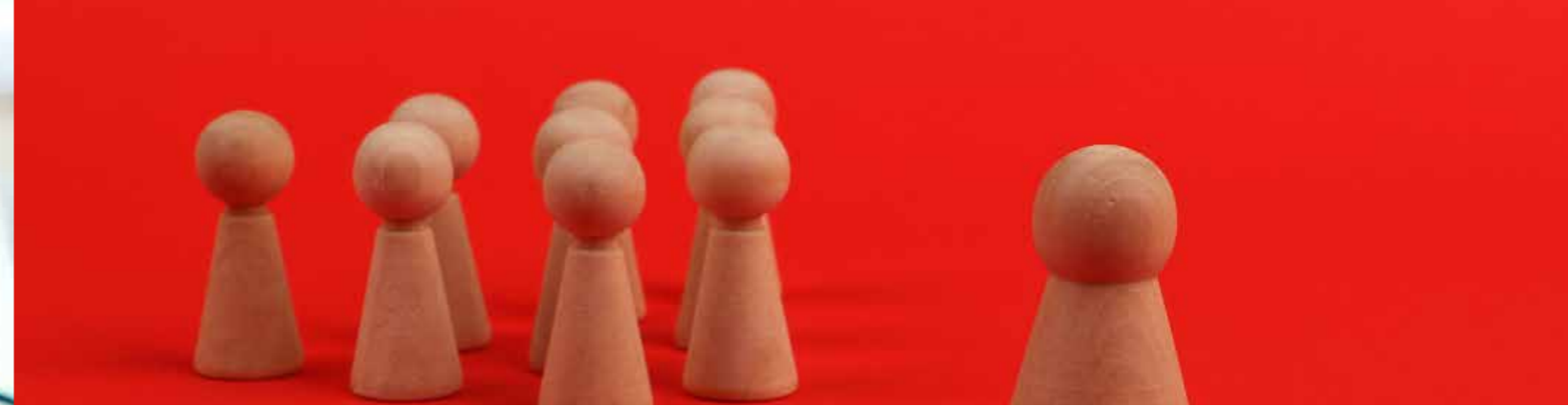
CAREER OPPORTUNITIES

- Analytical scientist
- Forensic Scientist
- Microbiologist
- Pharmacologist
- Lab technician
- Engineering
- Teacher
- Healthcare
- And more!

ENTRY REQUIREMENTS:

At least 5 x GCSEs at Grade 4 or above, including English, Maths, and Grade 5s in Combined Science or Grade 5s in Triple Science.

COURSE LEADER: Dr L. Penwill



Sociology

A Level - Eduqas Sociology

Looking to explore and challenge how we live, and make sense of the complex and rapidly changing world? This may be the course for you.

What causes crime? Why are some people rich and others struggling for money? Are men and women really equal in society today? Why have youth cultures developed since the 1950s?

Sociologists study these kinds of questions in order to understand and potentially change the world we live in. The most important reason for studying sociology today is that it is the best way of making sense of the complex and rapidly changing world. It will change your way of thinking and develop your understanding of yourself and the forces that shape your behaviour. It will allow you to question and challenge how we live and help you to understand social situations and human behaviour.

This course will provide you with the skills you will need to pursue further study in Undergraduate courses across various related fields.

There will also be opportunities outside the classroom to enrich your creative learning. Such as our annual trip to Dartmoor Prison and Custody Centre, and a trip to University of Plymouth Sociology Taster Day.

This course can be taken as part of several of our Career Pathways. Go to Page 34 for more details.

ASSESSMENT:

Component 1 (40%)
Socialisation and Culture. Written Paper 2hrs and 30 mins

Component 2 (20%)
Sociological Research Methods. Written Paper 1hr and 45 mins

Component 3 (40%)
Power and Stratification. Written Paper 2hrs and 30 mins

CAREER OPPORTUNITIES

- Social Work
- Education
- Politics
- Health
- Marketing
- Policing
- Youth Work
- And more!

ENTRY REQUIREMENTS:

At least 5 x GCSEs at Grade 4 or above, including a Grade 4 in English and Maths.

COURSE LEADER: Mrs L. Rust-Ashford



Sport & Physical Activity

CTEC - OCR Level 3 Extended Certificate in A Level - Eduqas Psychology

Our course provides you with the opportunity through applied learning to develop the core specialist knowledge, skills and understanding required in the sport and physical activity sector.

What skills do I need?

Students must have a keen interest and be actively participating in sport and physical activity. It is also important to have good punctuality and attendance, a capacity to be hard working, an ability to be organized and to meet deadlines.

How will I be taught?

You will attend eleven 55 minute lessons every two weeks. Delivery of the course will encompass a range of teaching and learning methods including investigations, presentations, coaching and leadership practicals, observational analysis, group based projects and written assignments.

What will this course prepare me for?

This course introduces basic concepts that will be studied in greater depth at university or higher education or prepares you for a career in the sports industry.

What will I study?

You will cover 3 core units over the course:

- Body systems and how it is affected by physical activity
- Sports Coaching and Activity Leadership
- Sports Organisation and Development.

In Year 13 students will study two additional units:

- Sport and Exercise Psychology
- Organisation of Sports Events

This Course is Equivalent to 1 x A Level

This course can be taken as part of several of our Career Pathways. Go to Page 34 for more details.

ASSESSMENT:

Students will be assessed by two externally examined units and three centre-assessed coursework units moderated by OCR over two years.

ENTRY REQUIREMENTS:

At least 5 x GCSEs at Grade 4 or above, including English, MATHs and a +M2 in P.E, and an M2 BTEC Sport Level 2 if studied.

COURSE LEADER: Mrs E. Clark

CAREER OPPORTUNITIES

- Sports Development
- Performance Analyst
- Sports Coaching
- Fitness Instructor
- Physiotherapy
- Nutritionist
- Teaching
- And more!

Uniformed Protective Services

BTEC - Edexcel Level 3 National Diploma in Uniformed Protective Services

If you are considering a career in any of the Public Service sectors, or any Security Organisation, our Uniformed Protective Services is for you

Over the course you will:

- Learn how Public Services prepare to deal with major incidents/emergencies
- Prepare for and take part in team building, leadership and communication exercises.
- Study topics such as exercise, health and lifestyle and fitness in preparation for the services entry tests and requirements
- Study citizenship and diversity, the legal system and police powers, understanding how society around us is inclusive and protects citizens according to the law
- Discuss government policies and legislations relating to public services.
- Consider crime and its impact on society
- Practice Expedition Skills

Our course will give you a broad basis of study, and is designed to support your progression to higher apprenticeships and higher education.

This course comprises of a combination of coursework and examinations.

There will also be opportunities outside the classroom to enrich your creative learning.

This course can be taken as part of several of our Career Pathways. Go to Page 34 for more details.

This Course is Equivalent to 2 x A Levels

ASSESSMENT:

Coursework 60% of Grade
Practical Exam 40% of Grade

ENTRY REQUIREMENTS:

At least 5 x GCSEs at Grade 3 or above, including a Grade 3 in English and Maths.

COURSE LEADER: Mrs M. Evans

CAREER OPPORTUNITIES:

- Paramedic
- Police
- Fire Services
- Private Security
- Coast Guard
- Royal Navy
- RAF
- Army
- Criminology
- And more!

Career Pathways

Choosing what to study after GCSEs is an exciting opportunity to shape your future – but it can also feel overwhelming. That’s why this section of our course guide is here to support you in making informed, confident decisions.

Whether you’re aiming for university, an apprenticeship, or heading straight into the world of work, our Pathways Guide will help you connect your interests and strengths with real-world careers and qualifications we offer.

Each pathway includes:

- A brief overview of what it involves
- Recommended qualifications you can study with us
- Post-Sixth Form routes, including university courses and apprenticeships
- Example careers in that sector

From Creative and Marketing to Engineering, Health, Law, you’ll see how your subject choices today can lead to exciting and meaningful opportunities tomorrow.

Use this guide to explore the different directions your journey could take. Think about your passions, your skills, and the type of future you’d like to build and remember, we’re here to help every step of the way.

CREATIVE AND MARKETING

Explore careers in design, media, advertising, and digital content creation. This pathway suits imaginative thinkers who enjoy storytelling, visual arts, branding, and communication.

Recommended Qualifications:

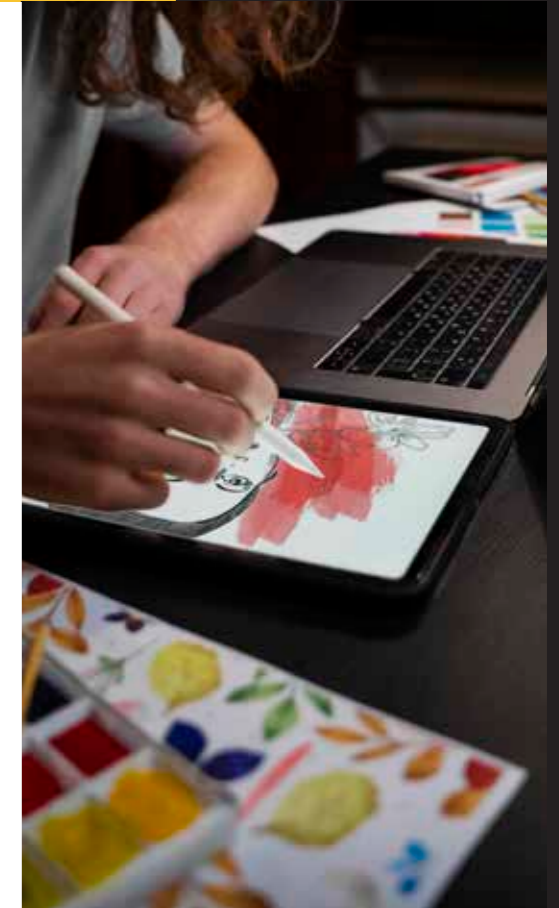
- A Levels: Media Studies, Art & Design, English Language and Literature, Photography
- BTECs: Performing Arts, Music Performance (for creative fields), Business

Post Sixth Form Routes:

- University degrees in Media, Marketing, Graphic Design, Communications
- Higher and Degree Apprenticeships in Digital Marketing, Content Creation, Advertising
- Creative industry training schemes

Example Careers:

Graphic Designer, Social Media Manager, Digital Marketer, Copywriter, Animator, Video Editor, Advertising Executive



LAW

Prepare for a career in legal services, including solicitor, barrister, or legal executive. Ideal for students with strong analytical skills, attention to detail, and an interest in justice and debate.

Recommended Qualifications:

- A Levels: English Language and Literature, History, Philosophy and Ethics, Sociology
- BTECs: Business

Post Sixth Form Routes:

- Law degrees (LLB), Criminology or related subjects
- Solicitor Degree Apprenticeship (Level 7 – 6 years)
- Paralegal and legal services apprenticeships
- Law conversion course (PGDL) for non-law graduates

Example Careers:

Solicitor, Barrister, Paralegal, Legal Executive, Court Clerk, Legal Researcher, Compliance Officer, Probation Officer



SCIENCE AND RESEARCH

For curious minds who love exploring how the world works. This pathway covers careers in biology, chemistry, physics, and research, leading to roles in labs, universities, or tech companies.

Recommended Qualifications:

- A Levels: Biology, Chemistry, Physics, Maths
- Science: (OCR AAQ)

Post Sixth Form Routes:

- University degrees in Biomedical Science, Chemistry, Physics, Environmental Science
- Higher/Degree Apprenticeships in Lab Science, Food Technology, Chemical Science
- Research careers in pharmaceuticals, tech, healthcare or environmental science

Example Careers:

Research Scientist, Laboratory Technician, Forensic Scientist, Biomedical Scientist, Environmental Analyst, Microbiologist, Scientific Data Analyst



HEALTH AND MEDICAL

Focus on caring for others and improving lives. Careers include nursing, medicine, midwifery, and allied health professions. Best suited for compassionate individuals with a strong science background.

Recommended Qualifications:

- A Levels: Biology, Chemistry, Psychology
- BTECs: Health and Social Care
- Science: (OCR AAQ)

Post Sixth Form Routes:

- Degrees in Nursing, Medicine, Midwifery, Paramedic Science, Occupational Therapy
- Degree Apprenticeships in Nursing, Radiography, Healthcare Science
- NHS training programmes and Allied Health routes

Example Careers:

Doctor, Nurse, Midwife, Paramedic, Occupational Therapist, Radiographer, Healthcare Support Worker



ENTERPRISE, FINANCE AND HOSPITALITY

Explore how businesses are created and managed, how financial decisions are made, and how the hospitality sector operates; from hotels and events to customer service and tourism.

Recommended Qualifications:

- A Levels: English Language and Literature, Maths
- BTECs: Business, Information Technology

Post-Sixth Form Routes:

- Degrees in Business, Finance, Marketing, Event Management, Hospitality Management
- Apprenticeships in Business Admin, Accounting, Customer Service, Events
- Entry-level roles in retail, tourism, or events

Example Careers:

Hotel or Retail Manager, Financial Advisor, Accountant, Event Planner, Business Executive, Entrepreneur



TEACHING AND EDUCATION

Inspire the next generation by becoming a teacher, teaching assistant, or education specialist. A great choice for those passionate about learning and helping others succeed.

Recommended Qualifications:

- All subjects offered can lead to a career in teaching

Post Sixth Form Routes:

- Degrees in Education, Early Years, or subject-specific degrees followed by PGCE
- Teaching apprenticeships (Teaching Assistant, Postgraduate Teacher Apprenticeship)
- Early years educator routes
- Routes through South West Institute for Teaching (SWIFT) and TeachFirst

Example Careers:

Teacher, SEN Teacher, Teaching Assistant, Nursery Worker, Education Consultant, Learning Mentor, Education Psychologist (with further study), Education Welfare Office



SPORT AND EXERCISE

Turn your passion for fitness into a career. This pathway covers coaching, physiotherapy, sports science, and personal training, perfect for active learners who enjoy teamwork and performance.

Recommended Qualifications:

- A Levels: Biology, Psychology
- CTEC: Sports and Physical Activity

Post Sixth Form Routes:

- Degrees in Sports Science, Coaching, Physiotherapy, Strength and Conditioning
- Apprenticeships in Personal Training, Coaching, Fitness Instructing
- Careers in schools, gyms, sports teams or rehabilitation

Example Careers:

Sports Coach, Physiotherapist, PE Teacher, Sports Scientist, Personal Trainer, Sports Development Officer



ENGINEERING

Solve real-world problems with innovation and practical skills. Engineering covers mechanical, electrical, civil, and aerospace fields—ideal for logical thinkers who enjoy maths, science, and design.

Recommended Qualifications:

- A Levels: Maths, Physics
- BTECs: Engineering
- Other: Science (OCR AAQ)

Post Sixth Form Routes:

- Degrees in Mechanical, Civil, Electrical, Aerospace or Automotive Engineering
- Degree Apprenticeships in Engineering with firms across transport, energy, construction
- HNCs, HNDs or T Levels in Engineering or related disciplines

Example Careers:

Civil Engineer, Mechanical Engineer, Electrical Engineer, Aerospace Engineer, CAD Technician, Robotics Engineer



PUBLIC SERVICES

Prepare for vital roles in the police, fire service, armed forces, or civil service. This pathway suits motivated individuals with a sense of duty, discipline, and strong communication skills.

Recommended Qualifications:

- A Levels: Sociology, Psychology, Geography, History
- BTECs: Uniformed Protective Services

Post Sixth Form Routes:

- Apprenticeships in Policing, Firefighting, Armed Forces
- Degrees in Criminology, Policing or Public Services
- Entry through recruitment and structured training programmes

Example Careers:

Police Officer, Firefighter, Soldier or RAF Officer, Prison Officer, Intelligence Analyst, Border Force Agent, Civil Servant, Probation Officer



Why We Chose Sixth Form

Deciding where to continue your studies after GCSEs is a big step, and who better to hear from than students who've already made that choice? Here's what some of our Sixth Form students had to say about why they chose to stay on, what they enjoy most, and how it's helping them prepare for the future.

“ I chose to stay on at St Cuthbert Mayne Sixth Form for three reasons; firstly the support the teachers give us, I never feel like I am on my own. Secondly the choice of subjects, as the Sixth Form offered me the subjects I really wanted to go on and study. And finally the social side as it is a really close knit community.

“
The teachers are really keen to help support us on our chosen pathways.
..... ”

I am studying Maths, PE and Science and I hope to go on to study Finance at University. I really enjoy Maths and think that the support we get at Sixth Form is brilliant.

“ I wanted to study at Sixth Form because of the support the teachers give us; they make a real effort to get to know us, they know if we're having a good day or bad day, if we need some extra help or some space. ”

We got to go on a trip to Falmouth and we stayed at the University. It helped us all bond as a year group and gave us an insight in to University life.

“ I hope I am still in contact with the friends I have made at Sixth Form in years to come. ”

“ **Sociology is my favourite subject because I find it really interesting learning about why people behave the way they do based on things like class, gender and ethnicity. It just makes you see the world differently - I think it's brilliant.** ”

The teachers and friends make Sixth Form a really safe and supportive environment to learn in. I never feel judged and can always ask for help when I need it.

Alumni

St Cuthbert Mayne graduate, Sian Warren, now works as a Senior Character and Creature Modeller for large vfx studios. From Industrial Light & Magic (ILM)/Disney and MPC film Character Lab to scientific publications with the Society of Vertebrate Palaeontology.

ILM was founded by George Lucas and has created the visual effects for blockbusters including Star Wars and Jurassic franchises and Marvel's Avengers: Endgame.

While studying at St Cuthbert Mayne Sixth Form, Sian took Media Studies, Art and Computing A Levels. This enabled her to merge traditional fine art skills with digital art/film techniques. She has always had a strong passion for realism, animals and dystopian worlds. Having a clear understanding of traditional art practices (forms, silhouettes, colour theory) combined with experimental editing methods like chroma-key enabled her to be expressive but grounded in her work.

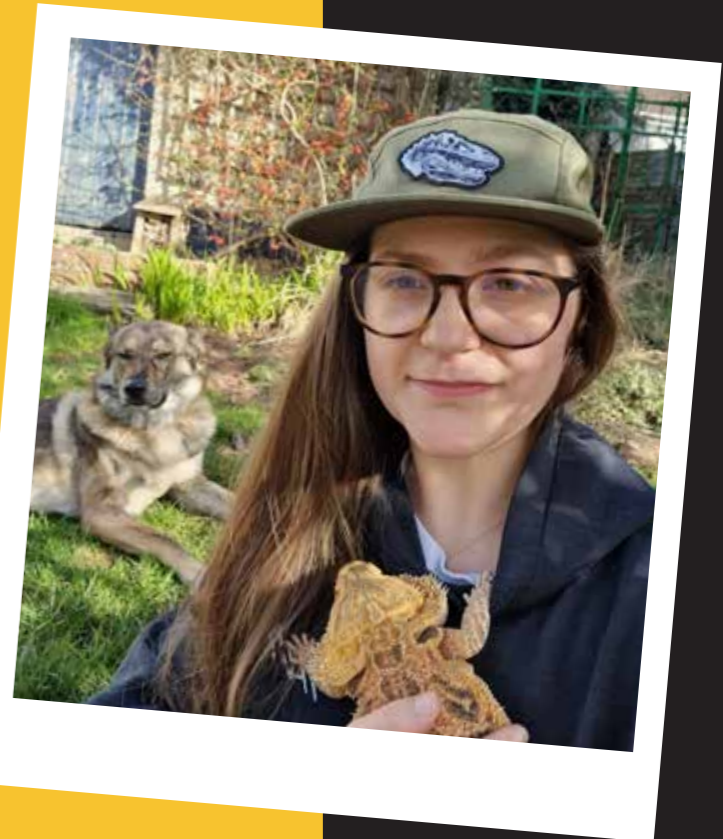
Sian went on to study Computer Animation Arts at Bournemouth University (National Center for Computer Animation). During her University years, Sian focused on digital sculpting, rigging and fur simulations, all skills needed to create believable creatures.

After University, Sian was selected to join ILM/Disney's 'Jedi Academy' as a Modelling Artist. From there, Sian has gone on to develop a very impressive creative career concepting, designing and creating iconic characters for Disney's Mufasa: The Lion King and Snow White, Marvel's Antman and Loki, Netflix's Life on Our Planet plus working with the BBC and Amazon Prime.

Whilst collaborating with paleontologists to create educational scientific prehistoric animal models and live 'how to' demos for worlds number 1 sculpting software Zbrush by Maxon. The Art of Science: Paleo Art with Zbrush at FMX conference 2025, which encompasses her goal, blending the disciplines of art and science to further our understanding of the world around us, past, present and future to create the believable characters and creatures we know and love today.

“My current job role allows me to collaborate with artists from all over the world, on projects that fuel my passion, creativity and challenge me daily,” said Sian.

Sian's top tip for students is to try everything. “You never know what you may love or enjoy, and it is all about learning and observing; Reference is Key.”





How to Apply

Research

Get information about all the available course on offer here by browsing our course guide. Talk! Chat to your teachers, career advisers, parents, employers, friends and anyone else who is able to give you good advice about your future!

Application

Download and complete your online application form. Available from 6th February. Deadline: 9:00 am 2nd March. If you have any questions call us on: 01803 328 725.

Interview

Once you have applied, we will invite you for an interview where we can discuss your options. Relax, we don't bite! We will help you and support you with any additional needs that you may have.

Results Day

Once GCSE results are released, you will be able to start making things official! If your results are what you expected, we will look forward to seeing you on enrolment day!

Don't panic! If your results aren't quite what you expected, get in touch with us. We will be able to see how we can help put you on the right track.

Enrol

Once you are all set and ready to join the STCM team, we will contact you with a date where you can come into the Sixth Form to officially register.



ST CUTHBERT MAYNE SIXTH FORM



www.st-cuthbertmayne.co.uk

01803 328 725

Facebook - /stcmtorquay

Instagram - @stcmtorquay

X - @STCMSchool

